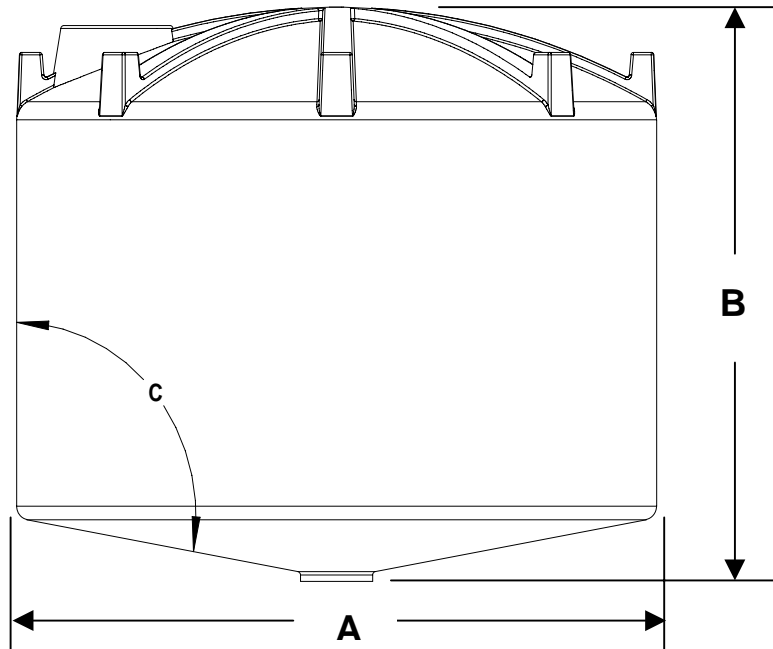


Cone Tank Specifications



CAPACITY		SPECIFICATIONS					PART NUMBER			
IMP. GALS.	U.S. GALS.	DIM A	DIM B	DIM C	LID SIZE	STANDARD FITTING	SD WHITE PART #	HD WHITE PART #	SD BLACK PART #	HD BLACK PART #
3700	4440	104"	136"	10°	16"	2"HD	1341	1339	1431	1432
2500	3000	102"	95.50"	10°	16"	2"HD	1342	1338	1433	1434
2000	2400	102"	80"	10°	16"	2"HD	1343	1340	1435	1436
1500	1800	102"	62"	10°	16"	2"HD	1400	1401	1402	1403
1400	1680	88"	78.50"	10°	16"	2"HD	1419	1420	1421	1422
1250	1500	88"	70"	10°	16"	2"HD	1415	1416	1417	1418
22	26.4	22.5"	21.25"	10°	16"	3/4"	1148	N/A	N/A	N/A
12	14.4	19"	16.50"	10°	8"	3/4"	1055	N/A	N/A	N/A

FEATURES:

- All tanks have UV8 protection to prevent deterioration from sunlight.
- All tanks over 1250 imperial gallons come standard with tie down lugs, 16" vented lid, gallonage indicator, bulkhead fitting.
- Optional 3" heavy duty bulkhead fitting available.
- All tanks are available in translucent white or black. (Black eliminates algae formation.)
- Sight gauges available to allow product visibility in black tanks.
- All tanks are potable and manufactured from materials that meet FDA Regulations 21 CFR 177.1520 and may be used to contain materials for human consumption.
- Heavy duty tanks are typically used to contain liquids with densities up to 19 lbs. per gallon.
- Standard duty tanks are typically used to contain liquids with densities up to 14 lbs. per gallon.
- Heavy duty tanks carry a five (5) year warranty against defects in workmanship.
- Standard duty tanks carry a three (3) year warranty against defects in workmanship.