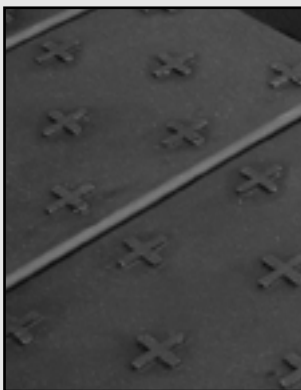


The Great Truck Weight

Driving an empty pick-up truck in the winter has always been a challenge. Snow, ice and not enough weight in the truck box can make the road treacherous. Sandbags and unsecured weights are a hassle and can be dangerous. The **Great Truck Weight** delivers a better ride, better traction, better handling, better breaking and increased safety!

- Adds approximately 450 lbs. to a full size truck bed
- Only 2 inches thick! Minimal loss of cargo space
- Fill each plank with sand through pre-drilled holes
- Extra weight gives you better traction & ride
- Durable polyethylene construction
- Fast and easy to install!



The Great Truck Weight includes planks featuring an embossed gripping system that provides excellent footing when walking in the box. It can be purchased to cover the entire floor of the truck bed, or if less weight is needed, half of a system can be installed.

Weight systems are currently available for all models of full-size trucks. Weight systems to fit mid-size truck beds available in Fall 2008.